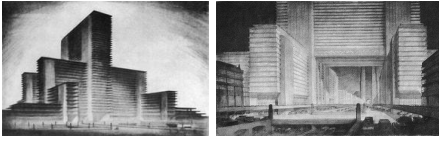


Artist Inspiration: Hugh Ferriss
Title: Industrial Arts, Technology



Gallery Artist: Emanuel Quiles
Title: Reflections

"Reflections" is meant to explore the present-day urbanization that inspires future architectural design to be built upon. This piece was created using a carved printing block of linoleum and water-based black ink, and is inspired by Hugh Ferriss with his use of compressing detail into simplified renderings. The Block Print is supposed to display the potential growth that modern architecture can bring to transform communities and expand beyond our own perspectives.

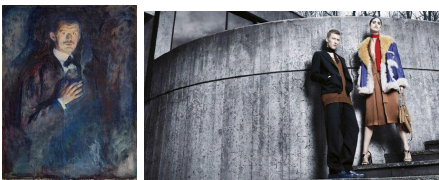
Artist Inspiration: Claes Oldenburg
Title: Paint Torch, Shuttlecocks



Gallery Artist: Emanuel Quiles
Title: Balance

"Balance" explores the contrasting perspectives that can arise from setting the line of what is or isn't a well-balanced lifestyle. This piece was created by detailed measurements and carving cardboard, with inspiration coming from Claes Oldenburg, who sculpted every-day objects into monumental-scales. The Axiomatic Object features solely an honest material that allows an established truth to form about the lack of function.

Artist Inspiration: Edvard Munch, PRADA
Title: Self-Portrait with Cigarette, FALL WINTER 2014 AD CAMPAIGN



Gallery Artist: Emanuel Quiles
Title: Self-Assurance

"Self-Assurance" illuminates the confidence in one's character not only through changes in my life, but incorporating architectural forms as well. This piece was created by using oil paints on a canvas with a projected image, and inspiration by PRADA's brutalist architecture photography that brings new light to a bleak landscape, and Edvard Munch with his portrayal of change through a self-portrait.

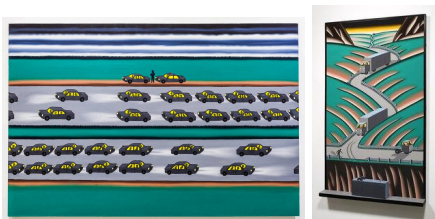
Artist Inspiration: Frank Lloyd Wright, Ludwig Mies van der Rohe
Title: SC Johnson Wax, The Farnsworth House



Gallery Artist: Emanuel Quiles
Title: The Communication Pavilion

"The Communication Pavilion" is a modernist architecture outdoor classroom concept that adapts a traditional classroom setting to one that is not only not bound to standards form, but acknowledges the importance of soft skills in today's world. This piece was created on photopea and mounted as posters, with inspiration coming from Frank Lloyd Wright's "Form and Function as one" mentality and use of scale, then Ludwig Mies Van der Rohe on modernist qualities.

Artist Inspiration: Roger Brown
Title: California Gawkers: Being the Chief Cause and Primary Source of California Traffic Jams, Jackknife

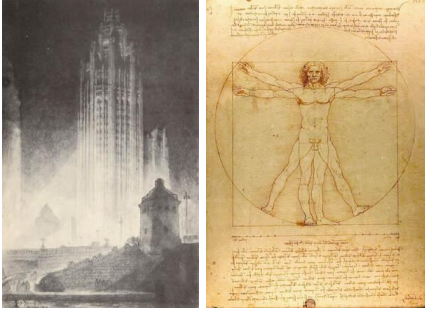


Gallery Artist: Emanuel Quiles
Title: Elevated Highways: Absence of Urban Planning

"Elevated Highways: Absence of Urban Planning" brings forth the U.S. interstate highway that valued getting from point A to B efficiently over considering urban fabric impact. This piece was created as a mixed media work, with inspiration coming from Chicago Imagist Roger Brown creating similar urban environment settings with an approach that breaks the 2D plane.

Artist Inspiration: Hugh Ferriss, Leonardo Da Vinci

Title: Chicago Tribune Building, Vitruvian Man



Gallery Artist: Emanuel Quiles
Title: Delineator of the Third Ward

"Delineator of the Third Ward" is a synergy of acknowledged assets, influences, beliefs/passions and developing practices from taking MIAD Advance Fine Arts. This piece was created by graphite and charcoal marks precisely on Stonehenge paper, with inspiration coming from Hugh Ferriss illustrating the current cityscape for future discussion and Leonardo da Vinci for a technical perspective/approach on the human figure.

Artist Inspiration: Hugh Ferriss, Wheelhaus

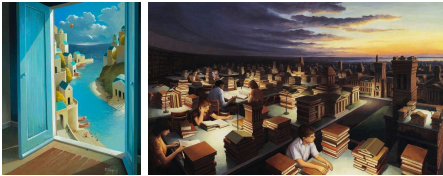
Title: Verticals on Wide Avenue, The RoadHaus Wedge RV



Gallery Artist: Emanuel Quiles
Title: Tiny Home

"Tiny Home" connects the downsizing architectural movement involving limitations in space as coinciding with the development of conscious living. This piece was created using SketchUp and charcoal sticks on charcoal paper, with inspiration coming from Hugh Ferriss responding to zoning laws on skyscrapers and Wheelhaus tiny home design that embody the modernist architecture movement.

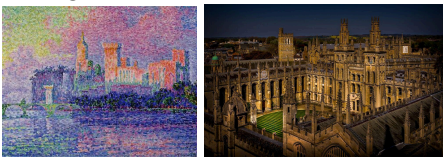
Artist Inspiration: Michiel Schrijver, Rob Gonsalves
Title: Memories of a Spring, Tower of Knowledge



Gallery Artist: Emanuel Quiles
Title: Memories of Passed Beginnings

"Memories of Passed Beginnings" is a conceptual piece that visualizes Contemporary Architecture to the roots of previous design movements and varying styles. This piece was created by applying acrylic paint onto canvas, with inspiration coming from Michiel Schrijver original "house-ness" structures and Rob Gonsalves inner child mentality with magical realism. Imaginary and dream-like worlds are emphasized through the identification of reflective, classic ideas of form.

Artist Inspiration: Paul Signac, Oxford
Title: The Papal Palace, All Souls College



Gallery Artist: Emanuel Quiles
Title: Higher Education in the Middle Ages

"Higher Education in the Middle Ages" reveals the exclusivity and status of Universities during their initial development in the late 11th century. This piece was created by applying oil onto canvas with inspiration coming from Paul Signac's pointillism technique with compositional choices and Oxford's structural characteristics from their Medieval Gothic Architecture buildings.

Artist Inspiration: Night Palm, Steve Powers
Title: Brazilian Treehouse, A Love Letter For You



Gallery Artist: Emanuel Quiles
Title: Away from Home - Pursuing Ambitions

"Away from Home - Pursuing Ambitions" models a luxury living room of a new inhabitant and the distance/connection from home. This piece was created digitally through SketchUp and manipulation through Photopea with inspiration coming from Night Palm's 70's inspired high-end living spaces and Steve Powers expression of love through meaningful text.

FILLER

FILLER

Artist Inspiration: Matthew Frederick, The Kubala Washatko Architects

Title: 101 Things I Learned in Architecture School, Milwaukee Public Market



Gallery Artist: Emanuel Quiles

Title: What an Architect should know

"What an Architect should know" is an overarching infographic that illustrates how I define architecture from the collective and refining experiences in art and design. This piece was created digitally through SketchUp and manipulated through Photopea with inspiration coming from Kubala Washatko Architects strong visual exemplar building and Matthew Frederick page design. This project serves as an overture/introduction to my body of work.